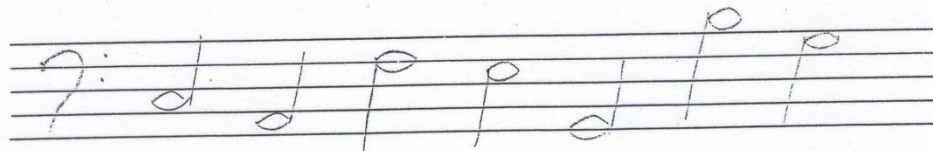
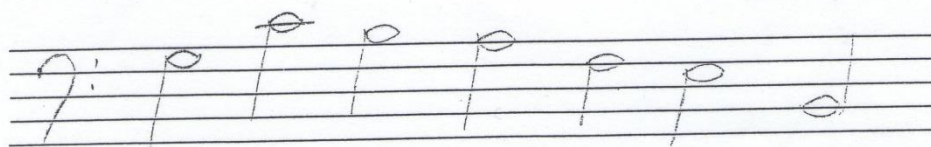
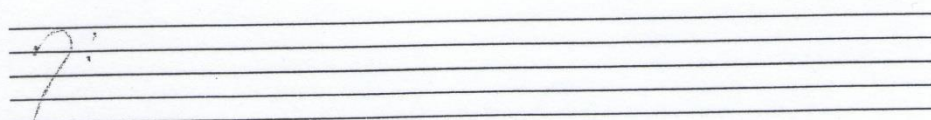


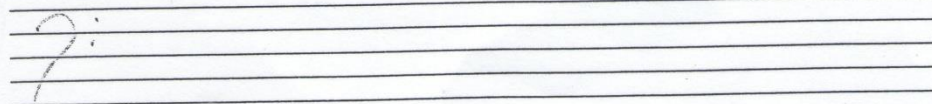
1) Urč názvy nôt v basovom kľúči:



2) Napíš noty v basovom kľúči:

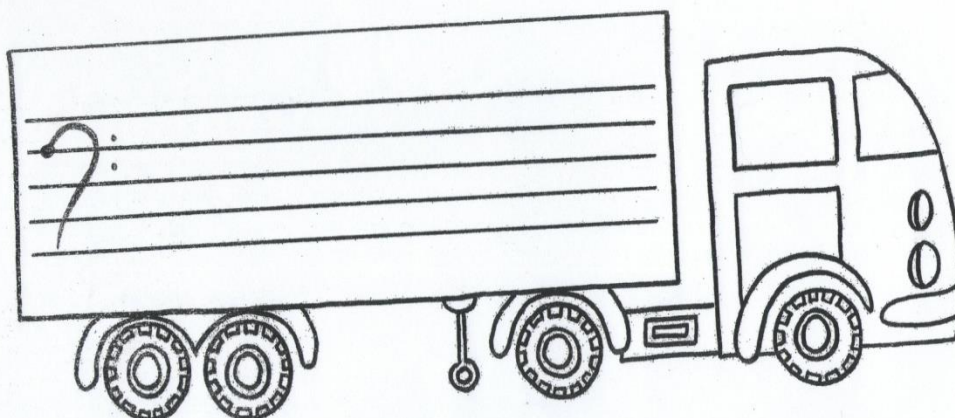


c1 g f e A G d

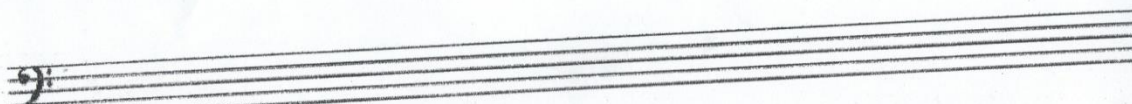


h a A G g f c1

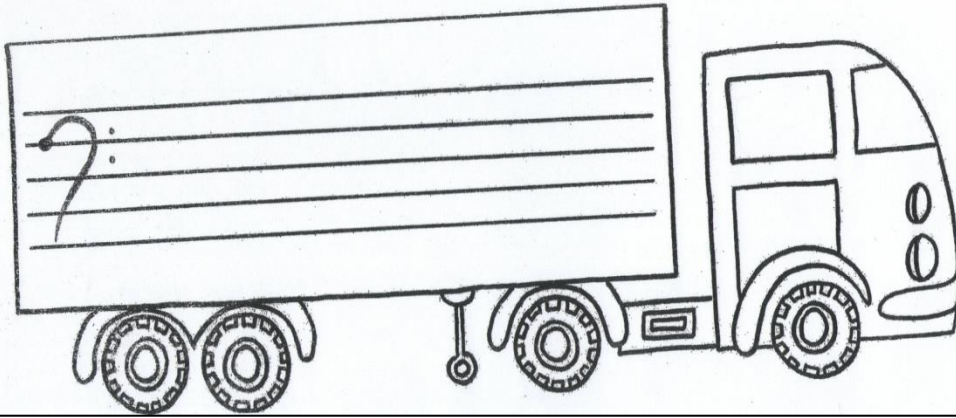
3) Napíš na plachtu kamióna noty v basovom kľúči – malá oktáva + c1,d1,e1



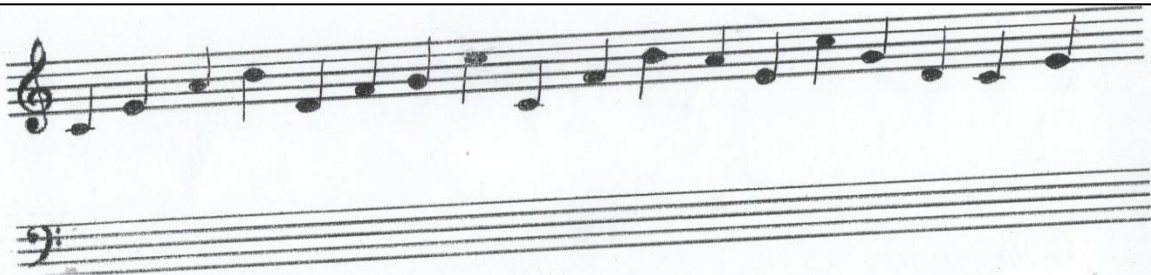
4) pomenuj noty v husľovom kľúči, potom ich prepíš do basového kľúča – využi malú oktávu + c1



5) Napiš na plachtu kamióna noty v basovom kľúči – veľká oktáva + c

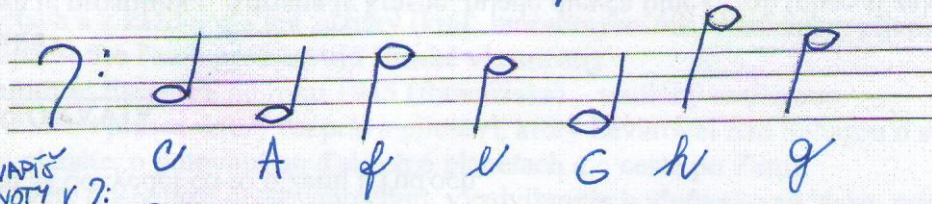
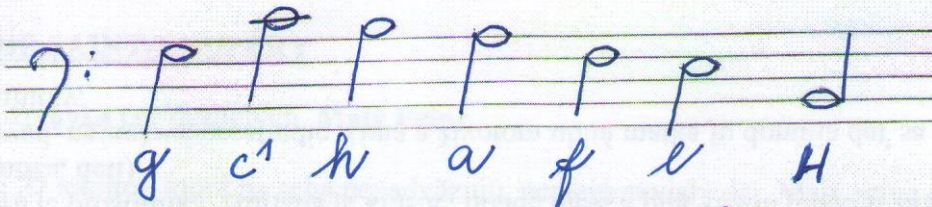


6) pomenuj noty v husľovom kľúči, potom ich prepíš do basového kľúča – využi veľkú oktávu + c

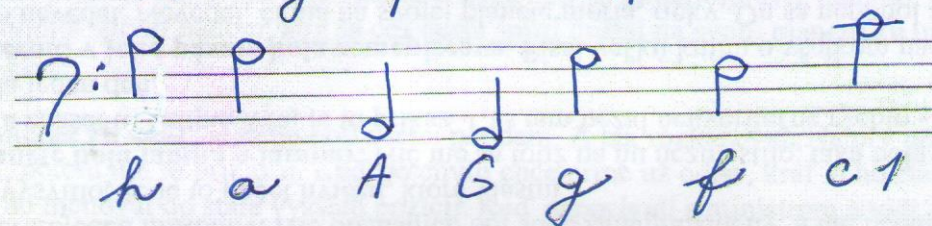
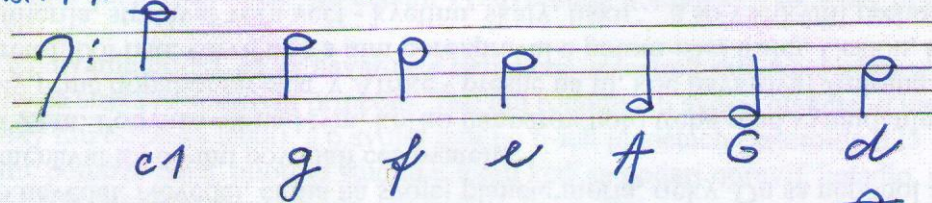


Skontroluj si, či si postupoval správne:

1) DURČ NÁZVY NÔT V BASOVOM KLÚČI:

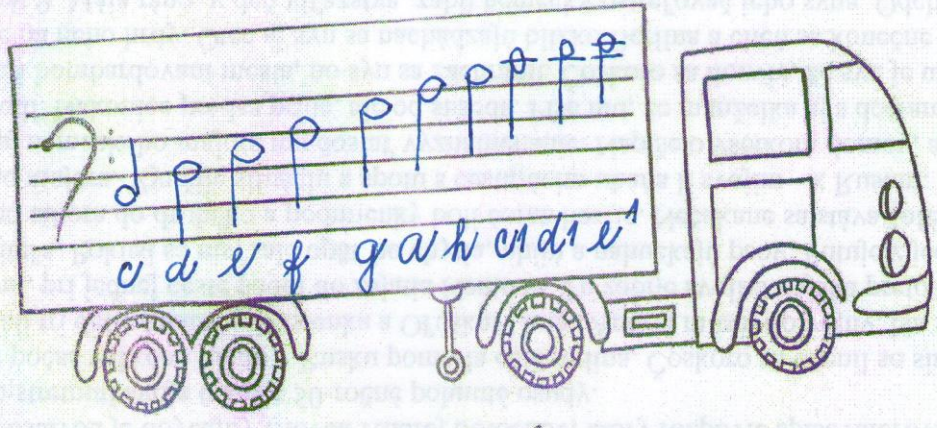


2) NAPIŠ NOTY V ?:



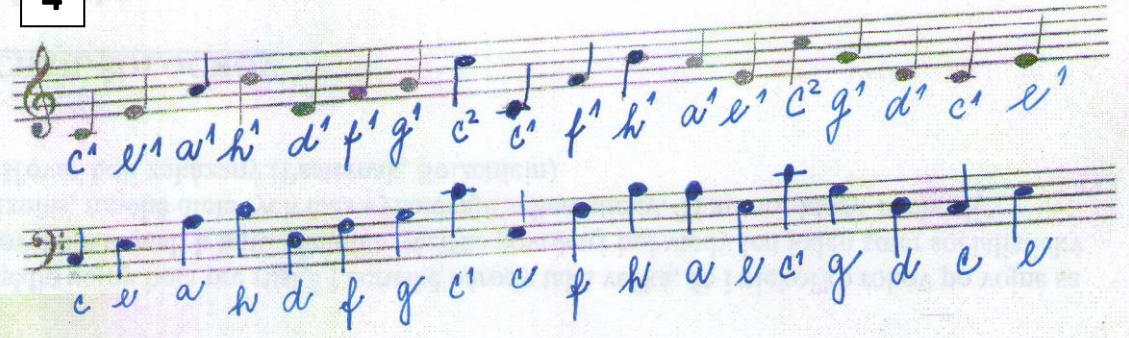


3



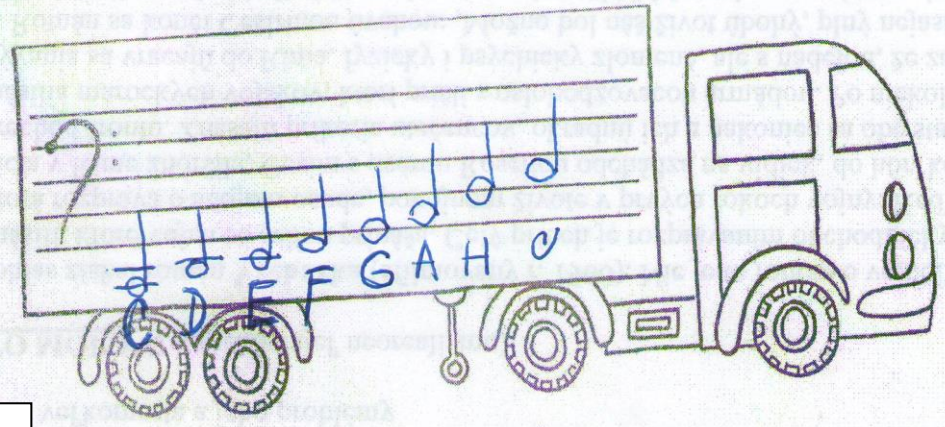
A hand-drawn illustration of a truck where the trailer is a musical staff. The staff contains a sequence of notes and letters: c, d, e, f, g, a, h, c', d', e'. The notes are quarter notes, and the letters are written below them in a cursive-like font.

4



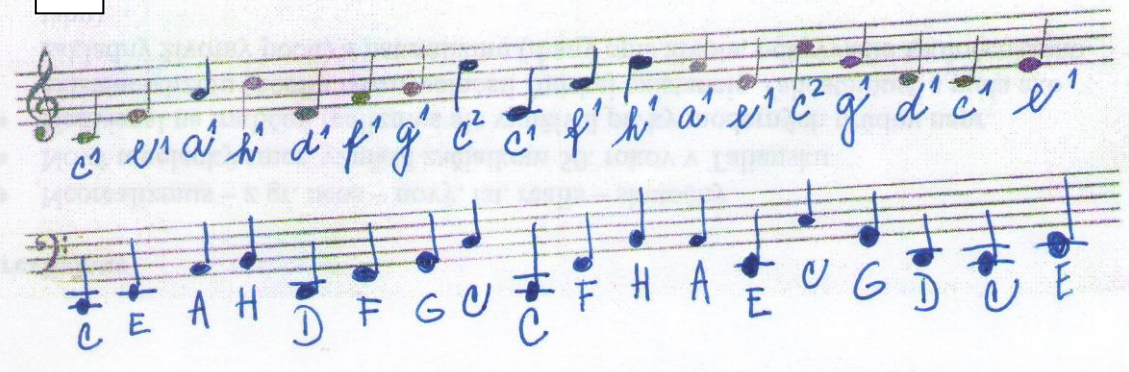
Two staves of musical notation. The top staff is in treble clef and contains notes with letters: c', e', a', h', d', f', g', c', c', f', h', a', e', c', g', d', c', e'. The bottom staff is in bass clef and contains notes with letters: c, e, a, h, d, f, g, c', c, f, h, a, e, g, d, e, e.

5



A hand-drawn illustration of a truck where the trailer is a musical staff. The staff contains a sequence of notes and letters: C, D, E, F, G, A, H, c. The notes are quarter notes, and the letters are written below them in a simple font.

6



Two staves of musical notation. The top staff is in treble clef and contains notes with letters: c', e', a', h', d', f', g', c', c', f', h', a', e', c', g', d', c', e'. The bottom staff is in bass clef and contains notes with letters: C, E, A, H, D, F, G, c, C, F, H, A, E, c, G, D, c, E.